

# PERFORMANCE 250

The versatile flat display designed to light up the outside world.

---

- Outdoor
- 3.1-5.9mm Pixel Pitch
- Rapid Deployment
- Multiple Formats
- High Brightness
- SMD LED



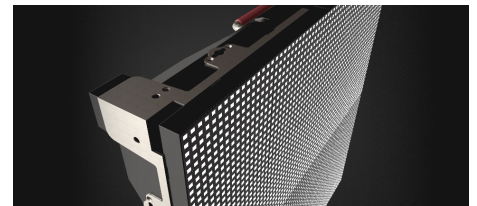
Now you have more choices with your outdoor LED display with the newest addition to the Performance Series™, the 250mm x 250mm LED Digital Wallpaper Topology.

Our fully outdoor rated, and highly adaptable LED tile can be tailored to form clean, virtually bezel-free angles to create either convex and/or concave structures in any shape or curvature imaginable. This smaller form factor tile allows for micro-faceted curves, and thus creates a more seamless curve.

All mounting brackets and structures are integrated into the

frame design, which allows for wall-mount, free-standing, hanging/tethered, or cantilevered mounting without any additional structures required.

Designed and tested to stand up to all types of outdoor conditions without the need for internal environmental controls. Backed by our industry-leading six-year warranty, Performance Series™ displays give you the power and performance to transform any outdoor space!



## Why Nanolumens

At Nanolumens, we've set our sights — and our standards — high when it comes to LED and service. We leverage the best of technology to meet everyday needs and enable digital transformation. Our promise to you is an unsurpassed first and lasting experience.

## NIXEL™ to Pixel Warranty

Your display is engineered to pass the ultimate test: time. We use high-performing materials like gold wiring to ensure your display is a worthwhile investment. Our Warranty coverage starts pixel one ensuring your display is covered 100% from our Atlanta headquarters.

---

## Benefits

### Multiple Formats

Maximize design flexibility with both cabinet and frame-and-skin topologies

### Environment Agnostic

Create displays in any environment with confidence knowing each cabinet is fully IP65 Rated

### High Quality Componentry

Performance series displays are built with high quality components which carry an industry leading 3 year extendable warranty. No small letters, no addendums.

### Long-Term Dependability

Our outdoor displays are engineered to withstand extreme weather conditions, ensuring your display lasts and exceeds expectations.

## SPECIFICATIONS: PERFORMANCE 250

Pixel Pitch	3.1 mm	3.9 mm	5.9 mm
Module Size (W X H) <sup>[1]</sup>	250 x 250 mm / 9.85 x 9.85 in		
Module array per "Full HD"	24x14 <sup>2</sup>	30x16 <sup>2</sup>	46x46 <sup>2</sup>
Module Resolution	80x80	64 x 64	42 x 42
Module Depth <sup>[2]</sup>	5.5 in / 139.7mm		
Watts/ft <sup>2</sup>	61.34 Max / 18.40 Avg		
Weight/ft <sup>2</sup>	TBD by Design		
Max Brightness (standard)	6000 nits	5500 nits	
Viewing Angle Max	178° horizontal / 140° vertical		
Viewing Angle L50 <sup>[3]</sup>	140° horizontal / 140° vertical		
Curvable	Yes (Faceted)		
Serviceability	Front		
Indoor/Outdoor	Outdoor		
Input Voltage (VAC)	110 / 120 / 208 / 220 / 240 VAC - Single Phase		
Output Bit Depth <sup>[4]</sup>	8-bit Standard (16.7 Million) / Up to 10-bit (>1 Billion)		
Lifetime	>100,000 hours		
AWARE™	Enabled Upon Request		
Operating Temperature	Operating: -10 to 50C		

1 Cabinet/module footprint, standard décor/frame adds 1/2" to overall system height and width

2 Cabinet/module depth, standard décor/frame depth adds 1/8" to overall system depth

3 L50 is objective measured angle at which brightness decreases to 50% of max brightness

4 Performance Series™ LED displays process at up to 14 bits per channel internally. Output Bit Depth is limited by the input bit depth and system design throughout.

