



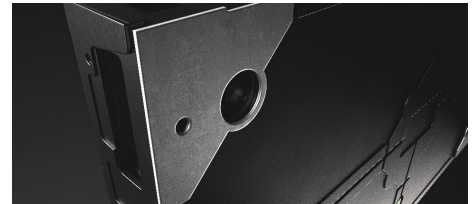
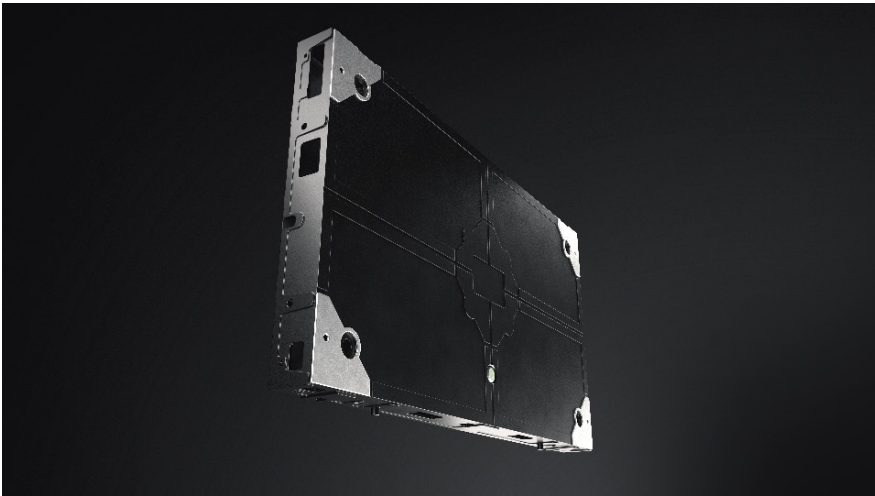
ENGAGE PRO

Next-Era Performance

- 0.7 - 1.25 mm
- TAA Compliant
- Ultra-High Contrast
- 16:9 Format
- COB Mini LED
- 100K Lifetime

Engage Pro is our newest cabinet based display innovation. Built on the same platform and processing as our renowned Engage Series, this solution delivers mount-less integration, high performance visuals, and simplistic serviceability.

Engage Pro is available in 16:9 format cabinets with pitches ranging from 0.7 - 1.25 mm, is TAA compliant and backed by our Nixel to Pixel Warranty.



Why Nanolumens

At Nanolumens, we've set our sights — and our standards — high when it comes to LED and service. We leverage the best of technology to meet everyday needs and enable digital transformation. Our promise to you is an unsurpassed first and lasting experience.

NIXEL™ to Pixel Warranty

Our Warranty coverage starts with pixel one, ensuring your display is covered 100% from our Atlanta headquarters.

Benefits

Incredible Blacks

COB-MiniLED architecture delivers over 4x more contrast than traditional SMD LED

Reject Reflections

The robust COB coating has been designed to minimize reflections enabling specification in brighter environments

TAA Compliant

Engage Series displays are TAA Compliant making them the perfect solution for your secure environments

Ultra-Fine Pitch

From super fine utility detail, to sharp visual detail, the Engage pro ultra-fine pitch displays ensure your data is super clear

SPECIFICATIONS: ENGAGE PRO

Pixel Pitch	0.7 mm	0.9 mm	1.25 mm
Module Size (W X H) ^[1]	600 x 337.5 mm / 23.62 x 13.29 in		
Module array per "Full HD"	3x3		
Module Resolution	768x432	640x360	
Module Depth ^[2]	50 mm / 1.97 in		
Watts/ft ²	44.60 Max / 13.38 Avg		
Weight/ft ²	2.34 kg / 5.2 lbs		
Max Brightness ^[3]	700 nits		
Viewing Angle Max	178° horizontal / 178° vertical		
Viewing Angle L50 ^[4]	160° horizontal / 160° vertical		
Curvable	No		
Serviceability	Front		
Indoor/Outdoor	Indoor		
Input Voltage (VAC)	110 / 120 / 208 / 220 / 240 VAC - Single Phase		
Output Bit Depth ^[5]	8-bit Standard (16.7 Million) / Up to 10-bit (>1 Billion)		
Lifetime	>100,000 hours		
Warranty	6 year		

1 Cabinet/module footprint, standard décor/frame adds 1/2" to overall system height and width

2 Cabinet/module depth, standard décor/frame depth adds 1/8" to overall system depth

3 Max Brightness is an estimated value and may fluctuate based upon calibration characteristics

4 L50 is objective measured angle at which brightness decreases to 50% of max brightness.

5 Engage Series LED displays process at up to 14 bits per channel internally. Final output bit depth is limited by content source capabilities.

